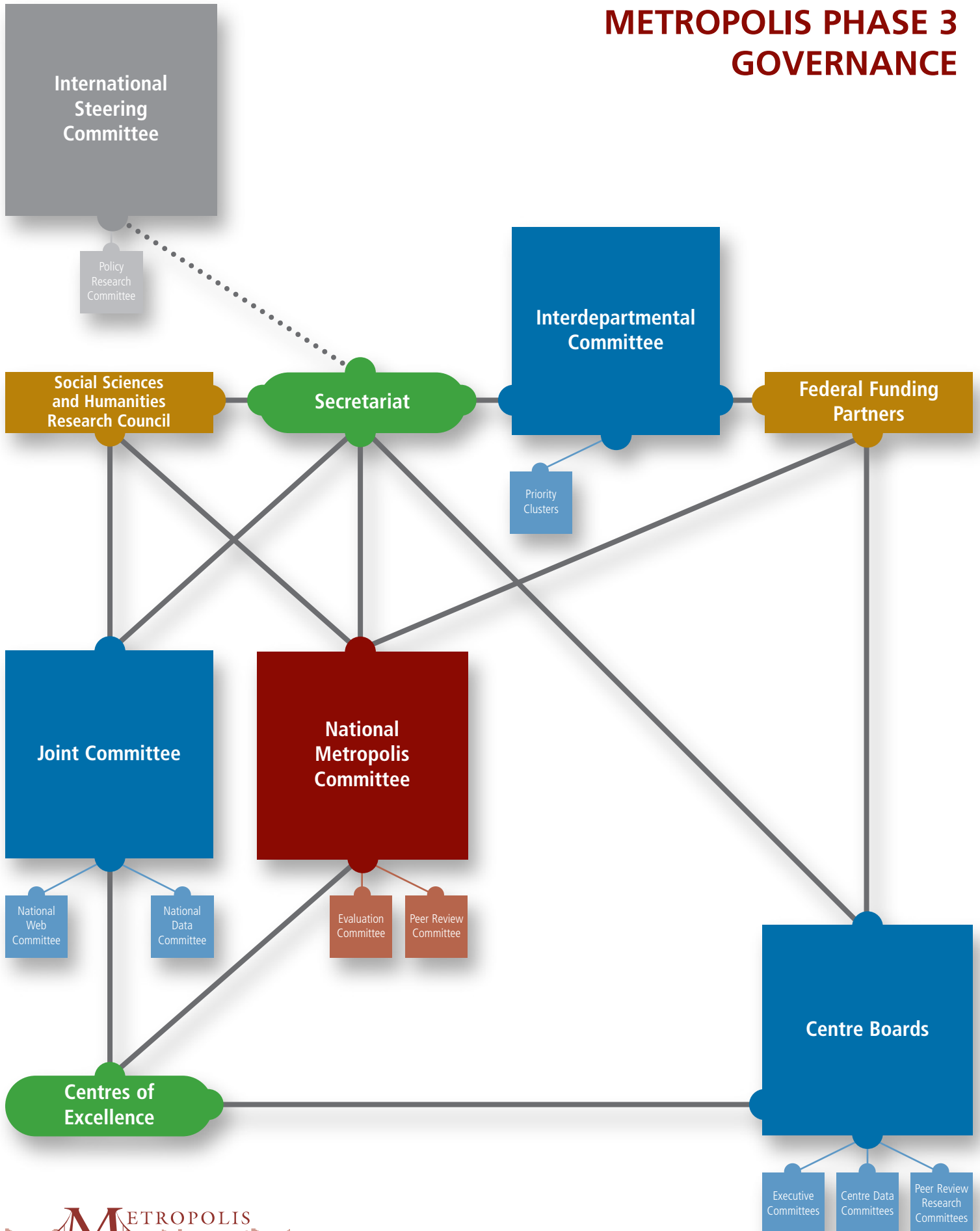


METROPOLIS PHASE 3 GOVERNANCE



NATIONAL METROPOLIS COMMITTEE (NMC)

The NMC is tasked with working at the supra-Centre level to ensure that Project activities and research effectively meet the expectations of federal funders. In effect, the NMC acts as a national Board of Directors to guide the Project. It is a Director-General level committee that meets quarterly.

Mandate

- Manage the annual National Research Competition
- Identify Centre-funded research of the most use to federal policy development
- Approve knowledge transfer plans for each of the six priority areas
- Approve plenary topics for the National Conferences
- Input into the Secretariat knowledge transfer plan
- Assess knowledge transfer to federal partners
- Dispute resolution for IDC and/or Joint Committee if necessary
- Recommend changes to federal priorities at halfway point of Phase III
- Ensure compliance with the Memorandum of Understanding

Membership

- Executive Head Metropolis Project Secretariat
- (7) One Director-General per primary federal funder
- (5) One Director per Centre
- Chair of the Interdepartmental Committee
- (2) Two civil society umbrella organizations
- (6) Six Priority Leaders*

Ex officio

- Vice-President from the Social Sciences and Humanities Research Council of Canada (SSHRC)

Sub-committees

Evaluation Committee

A committee co-chaired by the evaluation groups at CIC and SSHRC, is comprised of representatives from all primary federal funders. It will meet as necessary and will report on its activities annually to the NMC.

Peer Review Committee

A peer review committee will be established to adjudicate the National Call for Proposals. SSHRC will conduct a peer review based on scientific merit. Those that meet the requirements will be passed on to the NMC for a review of the pertinence to national-level policy and for the selection of the project to receive funds.

* The number of priority leaders accorded a vote will be adjusted to ensure that the majority of voting members are federal representatives.

INTERDEPARTMENTAL COMMITTEE (IDC)

The IDC is a director-level committee that meets at least quarterly. It is the primary mechanism for communicating information about all project activities to federal policy-makers.

Mandate

- Discuss horizontal research priorities and strategic directions
- Communicate information about all Project activities to a broad federal cross-section of federal partners
- Develop partnerships among stakeholders
- Develop content of the national conferences
- Make recommendations to the NMC on the six priority knowledge transfer plans

Membership

- (7) Metropolis Project Secretariat (Chair and six priority leads of Secretariat)
- (28) One director of policy and one director of research for each federal partner

Ex Officio

- SSHRC representative
- (5+) Members from other federal departments and agencies (Privy Council Office, Treasury Board Secretariat, Policy Research Initiative)
- Representative from the Ministère de l'Immigration et des Communautés culturelles*
- (5) Representatives from the Centres

Sub-committees

Priority Clusters

Priority Clusters chaired by the priority leads of the Secretariat will be called as necessary. These clusters will work to ensure that all federal partners interested in a priority area have the opportunity to input into the development of the annual priority knowledge transfer plan. These clusters will also work to ensure the effective transfer of knowledge to their federal colleagues working in the priority areas.

* Other provincial governments may also have an ex officio member on the IDC if they request to do so.

JOINT COMMITTEE

The Joint Committee is an administrative committee designed to ensure that the MoU is fully implemented across the five Centres.

Mandate

- Promote an exchange of information between the Centres and the Metropolis Secretariat
- Discuss the Project's strategic orientations as they apply to the Centres
- Facilitate co-ordination and joint planning
- Implement the Memorandum of Understanding
- Select the Priority Leaders

Membership

- Secretariat (Executive Head, Assistant Executive Head, International Project Director and five Centre Liaisons)
- SSHRC
- Centre Directors

Sub-committees

National Web Committee

Committee chaired by the Secretariat's webmaster that is designed to ensure effective and coherent approaches to the maintenance of the network of Metropolis websites. Minutes prepared by the Secretariat webmaster will be presented to the Joint Committee. This committee meets annually at the national conference.

National Data Committee

Committee chaired by Statistics Canada to discuss data needs and to provide statistical support and coordination to the Centres. Minutes of the meetings to be prepared by Statistics Canada and presented to the Joint Committee. This committee meets annually at the national conference.

CENTRE MANAGEMENT COMMITTEES OR GOVERNANCE BOARDS

The mandate and composition of these management committees is unique to each Centre. They have publicly available Terms of Reference which clearly state roles and responsibilities. They meet at least twice a year.

Mandate

- Develop and approve research agendas
- Provide strategic direction and stewardship for Centre operations

Membership¹

7 Primary Federal Partners

- Citizenship and Immigration Canada
- Canadian Heritage
- Canada Mortgage and Housing Corporation
- Human Resources and Social Development Canada
- Public Health Agency of Canada
- Policing, Justice and Security Coalition²
- Regionalization Coalition³

Academics and Local Partners

Ex Officio Membership

- Social Sciences and Humanities Research Council of Canada
- Metropolis Secretariat

Sub-committees

Executive Committees

Committees comprised of Centre Directors and a small number of members of the broader management committees tasked with the day-to-day operations of the Centres.

Peer Review Research Committees

These committees oversee the competitive research funding processes at the Centres. They conform to regular SSHRC practices and include at least one federal representative and at least some researchers external to the Centre. No member of a Centre's Peer Review Research Committee is eligible for funding at that Centre during their tenure.

Centre Data Committees

Committees that serve as the data focal point, organize Centres' data acquisitions and holdings, and act as a venue to discuss data needs.

¹ Other members vary by centre, but all include a mixture of researchers, policy-makers, practitioners/community partners. They must all include a plurality of academic researchers and federal policy-makers.

² Policing, Justice and Security Coalition members are: Public Safety Canada, Canada Border Services Agency, Royal Canadian Mounted Police and Department of Justice.

³ Regionalization Coalition members are: Atlantic Canada Opportunities Agency, Canada Economic Development - Québec, FedNor and the Rural and Co-operative Secretariats of Agriculture and Agri-food Canada.

INTERNATIONAL STEERING COMMITTEE (ISC)

The International Steering Committee provides advice and guidance on the operation of the international component of the Metropolis Project. This committee meets twice a year.

Mandate

- Provide strategic direction on the international component of the Metropolis Project
- Approve the location and content of the International Conferences

Membership

- Executive Head of the Canadian Secretariat
- Head of the European Secretariat
- International Project Director of the Canadian Secretariat
- One representative of the Strategic Policy Branch of Citizenship and Immigration Canada
- Representatives from international organizations, governments and research institutes
- One representative from the Canadian Metropolis Centres

Ex Officio

- Representative from Ministère de l'Immigration et des Communautés culturelles

Sub-committee

Policy Research Committee

This committee advises the ISC on how best to implement the strategic policy-research interests of the International Metropolis Project. It promotes, administers and evaluates proposals submitted through the Metropolis-PME Research Initiative.